

# General - Factoring Transmission

## Model Documentation



The European message format for the gas market

*Version 6.1*

*Document Version: 2*  
*Schema Version: 1*

## Table of Contents

|    |  |           |
|----|--|-----------|
| 23 |  |           |
| 24 |  |           |
| 25 | <b>1 Model Detail.....</b>                                   | <b>3</b>  |
| 26 | <b>2 Document usage decision table.....</b>                  | <b>4</b>  |
| 27 | <b>3 Factoring Transmission Process .....</b>                | <b>5</b>  |
| 28 | 3.1 Business Process .....                                   | 5         |
| 29 | 3.1.1 Sequence diagram .....                                 | 5         |
| 30 | 3.2 Factoring Transmission Document (FACTOR) .....           | 6         |
| 31 | 3.2.1 Factoring Transmission Document Contextual Model ..... | 6         |
| 32 | 3.2.2 Factoring Transmission Document Assembly Model .....   | 7         |
| 33 | 3.2.2.1 FactoringTransmission_Document.....                  | 8         |
| 34 | 3.2.2.1.1 Attributes.....                                    | 8         |
| 35 | 3.2.2.2 ResourceObject .....                                 | 9         |
| 36 | 3.2.2.2.1 Attributes.....                                    | 9         |
| 37 | 3.2.2.3 Row_AttributeInstance.....                           | 9         |
| 38 | 3.2.2.3.1 Attributes.....                                    | 9         |
| 39 | 3.2.2.4 Column_AttributeInstance .....                       | 9         |
| 40 | 3.2.2.4.1 Attributes.....                                    | 9         |
| 41 | <b>4 Document Change Log.....</b>                            | <b>10</b> |
| 42 | 4.1 Version .....  | 10        |
| 43 | 4.1.1 Attributes.....  | 10        |
| 44 |  |           |

# 1 Model Detail

## COPYRIGHT & LIABILITY

The Edig@s Workgroup (EASEE-Gas Message and Workflow Design Working Group) disclaims and excludes, and any user of the Edig@s Workgroup Implementation Guidelines acknowledges and agrees to the Edig@s Workgroup disclaimer of, any and all warranties, conditions or representations, express or implied, oral or written, with respect to the guidelines or any part thereof, including any and all implied warranties or conditions of title, non-infringement, merchantability, or fitness or suitability for any particular purpose (whether or not the Edig@s Workgroup knows, has reason to know, has been advised, or is otherwise in fact aware of any such purpose), whether alleged to arise by law, by reason of custom or usage in the trade, or by course of dealing. Each user of the guidelines also agrees that under no circumstances will the Edig@s Workgroup be liable for any special, incidental, exemplary, punitive or consequential damages arising out of any use of, or errors or omissions in, the guidelines.

## 2 Document usage decision table

The following decision table provides a summary of the message requirements depending on the type of message:

| Factoring Transmission Document                 | Factor   |
|---|--|
| identification                                  | Mandatory.   |
| version   | Mandatory.   |
| documentCode                                    | ATG = Factor   |
| creationDateTime                                | Mandatory.   |
| ValidityPeriod                                  | Mandatory.   |
| issuer_MarketParticipant.identification         | Mandatory; codingScheme = 305 (EIC Party X code).  |
| issuer_MarketParticipant.marketRole.roleCode    | ZSO = System Operator.   |
| recipient_MarketParticipant.identification      | Mandatory; codingScheme = 305 (EIC Party X code).  |
| recipient_MarketParticipant.marketRole.roleCode | ZSH = Balance Responsible Party.   |
| ResourceObject.identification                   | Mandatory; codingScheme = 305 (EIC Resource Object W code) or ZSO.   |
| ResourceObject.resourceTypeCode                 | A01 = Offshore pipeline.<br>A03 = Storage.<br>A06 = Gas treatment plant.<br>A07 = Regasification plant.<br>A08 = Compressor plant.<br>A09 = Gas production field.            |
| Row_AttributeInstance.attributeName             | Name defined for a value on a peer to peer basis. For example:<br>GCV<br>Gasplant  |
| Row_AttributeInstance.attributeValue            | Used to identify the value for the row that is associated with the Row_AttributeInstance.attributeName. For example :May identify GCV value or pipeline depending on matrix. |
| Column_AttributeInstance.attributeName          | Name of the column defined on a peer to peer basis. For example<br>GCV   |
| Column_AttributeInstance.attributeValue         | Value of the column name. For example<br>GCV.... value   |

## 3 Factoring Transmission Process

The factor document can be used by parties to exchange factors where conversions between volume and energy or other conversions (for example LNG) are needed. Factors are also needed in processing plants to calculate usage of different services (for example CO2 and H2S reduction). A gas field's availability, maximum and minimum lifting is given in volume to convert the volume to energy a GCV factor (gross calorific value) is needed. Since these can change from time to time a factor document is needed to be able to exchange such factors safely.

### 3.1 Business Process

#### 3.1.1 Sequence diagram

The sequence diagram represents one scenario but many scenarios may be provided.

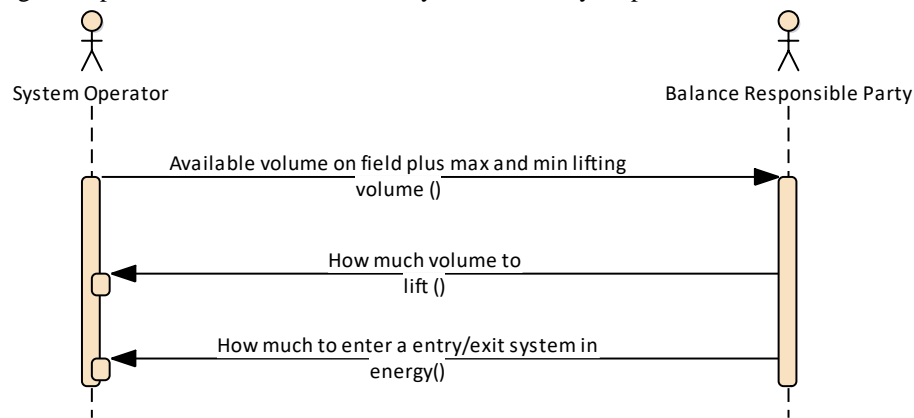


Figure: 1 **Sequence diagram**

## 3.2 Factoring Transmission Document (FACTOR)

### 3.2.1 Factoring Transmission Document Contextual Model

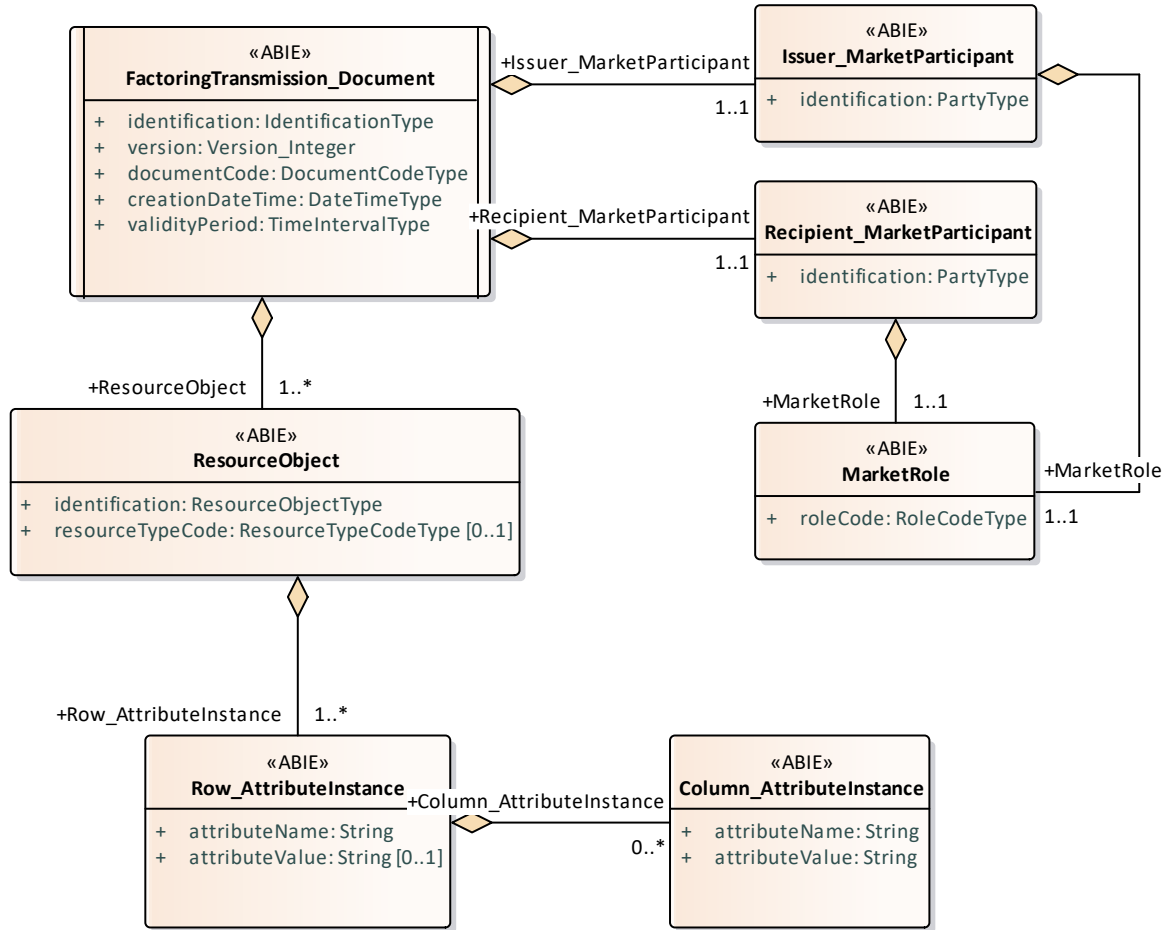


Figure: 2 Factoring Transmission Document Contextual Model

### 3.2.2 Factoring Transmission Document Assembly Model

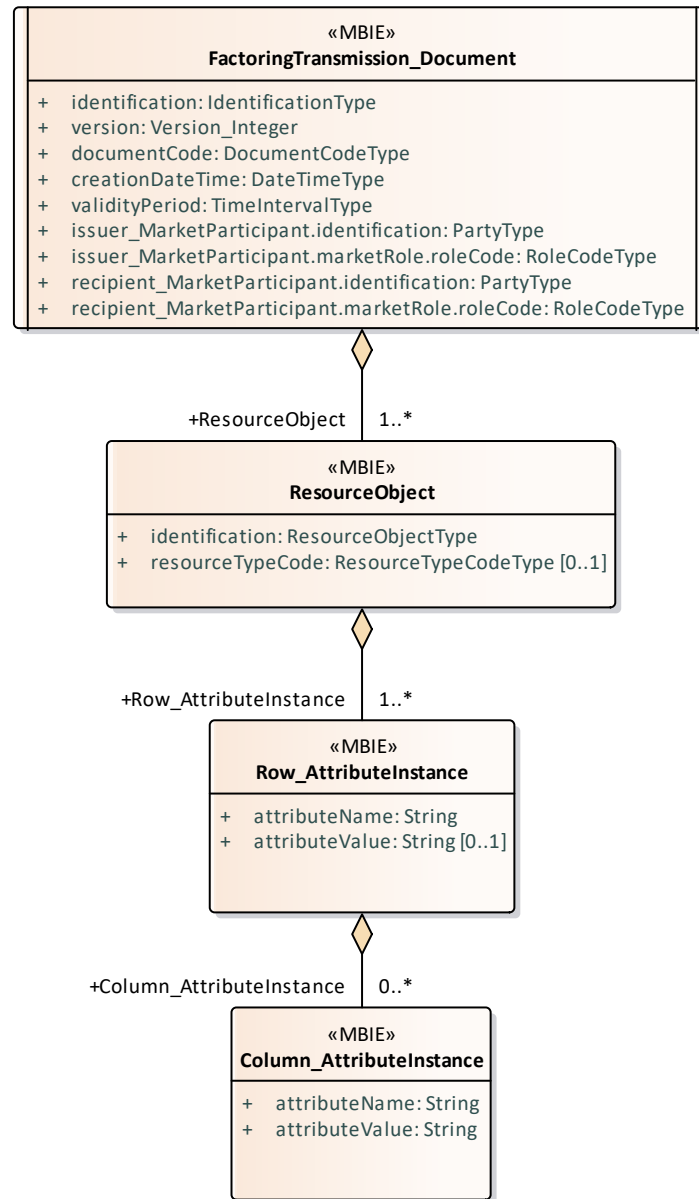


Figure: 3 **Factoring Transmission Document Assembly Model**

### 3.2.2.1 FactoringTransmission\_Document

The factoring transmission document enables the transmission of factors that should be applied for different attributes. Each attribute is identified in the AttributeInstance class.

Two AttributeInstance classes are available:

1. A Row\_AttributeInstance class that describes the characteristic if a given line in a matrix.

2. A Column\_AttributeInstance, which is optional and describes the number of columns in a given line.

In the case where there are no columns the Row\_AttributeInstance class represents a line which has a single Characteristic and value.

In the case where there are columns related to the row it represents for the line a number of columns each having a single characteristic and value. In this case the Row\_AttributeInstance.attributeValue may be used for example to describe a gas plant. If there is no value then there is normally only one line.

#### 3.2.2.1.1 Attributes

| Attribute                                       | Description   | Multiplicity |
|---|---|--------------|
| identification                                  | A unique identification of a document that is assigned by the issuer.   |              |
| version   | Version of the document being sent.<br>The first version number for a given document identification shall normally be 1.<br>The document version number must be incremented for each retransmission of a document that contains changes to the previous version.<br>The receiving system shall only accept a document with a version number which is greater than the previous version number of the same document. |              |
| documentCode                                    | Coded representation of the type of the electronic document.  |              |
| creationDateTime                                | Date and time of the creation of the current document expressed in UTC.   |              |
| validityPeriod                                  | The start and end date and time of the period of validity covered in the document.  |              |
| issuer_MarketParticipant.identification         | The identification of the party participating in the market.<br>--- The Issuer of the document.   |              |
| issuer_MarketParticipant.marketRole.roleCode    | A code identifying the role played by a market participant in the market.<br><br>--- The Issuer of the document.<br>--- The Role of a market participant.   |              |
| recipient_MarketParticipant.identification      | The identification of the party participating in the market.<br>--- The Recipient of the document.  |              |
| recipient_MarketParticipant.marketRole.roleCode | A code identifying the role played by a market participant in the market.<br><br>--- The Recipient of the document.<br>--- The Role of a market participant.  |              |



### 3.2.2.2 ResourceObject

The identification of a resource object.

#### 3.2.2.2.1 Attributes

| Attribute        | Description  | Multiplicity |
|------------------|--|--------------|
| identification   | The identification of a resource object.                   |              |
| resourceTypeCode | The coded identification of the type of a resource object. | [0..1]       |

### 3.2.2.3 Row\_AttributeInstance

A class describing an instance of an attribute.

#### 3.2.2.3.1 Attributes

| Attribute      | Description  | Multiplicity |
|----------------|--|--------------|
| attributeName  | The name of a document attribute in lower camelcase.<br>A name is a single word name that is formally agreed by the communication parties.               |              |
| attributeValue | The value of a named attribute.<br>A value that depends on the characteristics of the of the attribute name. It may be a decimal, date, or string value. | [0..1]       |

### 3.2.2.4 Column\_AttributeInstance

A class describing an instance of an attribute describing a factor.

For example to identify the following factors

Dry gas per field = 10,806

Shrinkage factor = 1,145

CO2 Factor = "1,567"

The Class Attribute instance would appear as follows:

```
<AttributeInstance><attributeName>dryGasPerField</attributeName><attributeValue>10,806</attributeValue></AttributeInstance>
<AttributeInstance><attributeName>shrinkingFactor</attributeName><attributeValue>1,145</attributeValue></AttributeInstance>
<AttributeInstance><attributeName>cO2Factor</attributeName><attributeValue>1,567</attributeValue></AttributeInstance>
```

#### 3.2.2.4.1 Attributes

| Attribute      | Description  | Multiplicity |
|----------------|--|--------------|
| attributeName  | The name of a document attribute in lower camelcase.<br>A name is a single word name that is formally agreed by the communication parties.               |              |
| attributeValue | The value of a named attribute.<br>A value that depends on the characteristics of the of the attribute name. It may be a decimal, date, or string value. |              |

## 4 Document Change Log

### 4.1 Version

#### 4.1.1 Attributes

| Attribute            | Description  | Multiplicity |
|----------------------|--|--------------|
| Version 1 2020-06-29 | Initial release  |              |
| Version 2 2021-03-23 | Release 6.1<br>Corrected validation of ResourceObject to maxLength(16) |              |